

ATT
Off 10 dB 20 dB 30 dB

FRONT-END
Presel Presamp Dither

AMPLITUDE
Ref Lev (dBm) -51
Scale (dB/dB) 5

FREQUENCY
1.593 000
Span (kHz) / RBW (Hz) 50.0 / 61.0
CF Step 5.0 kHz
Wheel Step 5.0 kHz

TUNING
Carrier

SAMPLING RATE (kS/s)
125 250 500 1000 2000

INPUT SELECT
Perseus Wav File File

PLAYBACK / REC
Date: Mon 14-Mar-2011 Time: 20:44:52 File:



Spec WFall Zoom Labels PeakStro NBW NBN NBV MirLog Pause MHold Clear Time Mix

AM SAM CW RTTY LSB USB FM **DRM** USER

BW 10.87 kHz
50 kHz 25 kHz 12 kHz 6 kHz 3 kHz 1.6 kHz 0.8 kHz

AVG Main Sec NB Lev MKR Clk Delta AGC MEM

Level (dBm): -45.8
-120 -100 -80 -60 -40 -20 0
S 1 2 3 4 5 6 7 8 9 +10 +20 +30 +40 +50 +60 +70

dream View Settings ?

Level (dB) 0 -10 -20 -30 -40 -50

23.62 kbps EEP AAC+ P-Stereo

WDR-Langenberg

German

ID:E00392

DRM-Testsendung vom WDR, Sender Langenberg

1 WDR-Langenberg | AAC+ P-Stereo (23.62 kbps)

2

3

4

System Evaluation

SNR: 20.2 dB	MSC CRC: ■	DRM Mode / Bandwidth: A / 9 kHz
MSC W/MER / MSC MER: 18.0 dB / 16.5 dB	SDC CRC: ■	Interleaver Depth: 2 s (Long Interleaving)
DC Frequency of DRM Signal: 8012.78 Hz	FAC CRC: ■	SDC / MSC Mode: 16-QAM / SM 64-QAM
Sample Frequency Offset: -46.53 Hz (-969 ppm)	Frame Sync: ■	Prot. Level (B / A): 1 / 0
Doppler / Delay: 0.41 Hz / 4.15 ms	Time Sync Acq: ■	Audio: 1 / Data: 0
	I/O Interface: ■	Received time - date: Service not available

Chart Selector

- Spectrum
 - Input PSD
 - Input Spectrum
 - Waterfall Input Spectrum
 - Shifted PSD
 - Audio Spectrum
 - SNR Spectrum
- Channel
 - Constellation

Input PSD

Channel Estimation: Frequency Interpolation
 Wiener Linear DFT Zero Pad

Misc Settings
 Flip Input Spectrum Mute Audio
 MLC: Number of Iterations: 0

Channel Estimation: Time Interpolation
 Wiener Linear

Interferer Rejection
 Bandpass Filter Modified Metrics

GPS
 Lat: 0.0000° Long: 0.0000° Alt: ?



dream

View Settings 2

Level (dB): 0, -10, -20, -30, -40, -50

20.96 kbps EEP AAC+ Mono

Galbeni ID 300-1

ID:1001

1	Galbeni ID 300-1 AAC+ Mono (20.96 kbps)
2	
3	
4	

System Evaluation

SNR: 23.5 dB	MSC CRC: ■	DRM Mode / Bandwidth: B / 10 kHz
MSC WMER / MSC MER: 25.1 dB / 23.2 dB	SDC CRC: ■	Interleaver Depth: 2 s (Long Interleaving)
DC Frequency of DRM Signal: 8040.06 Hz	FAC CRC: ■	SDC / MSC Mode: 16-QAM / SM 64-QAM
Sample Frequency Offset: -40.94 Hz (-852 ppm)	Frame Sync: ■	Prot. Level (B / A): 1 / 0
Doppler / Delay: 1.59 Hz / 5.85 ms	Time Sync Acq: ■	Number of Services: Audio: 1 / Data: 0
	I/O Interface: ■	Received time - date: Service not available

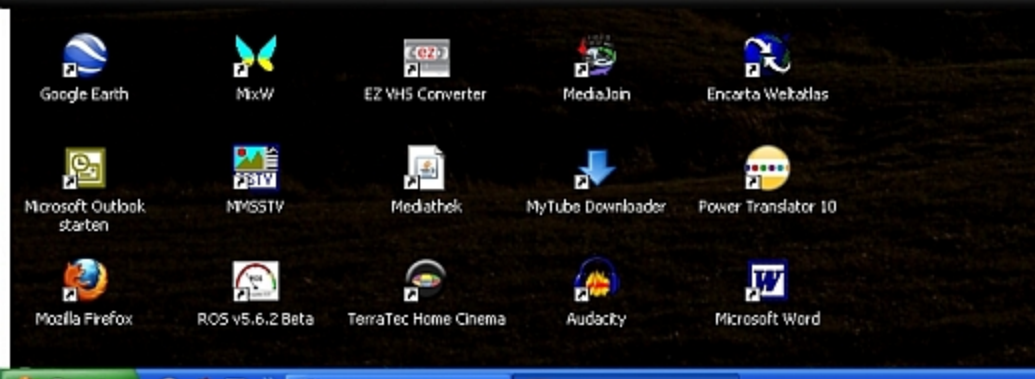
Chart Selector:

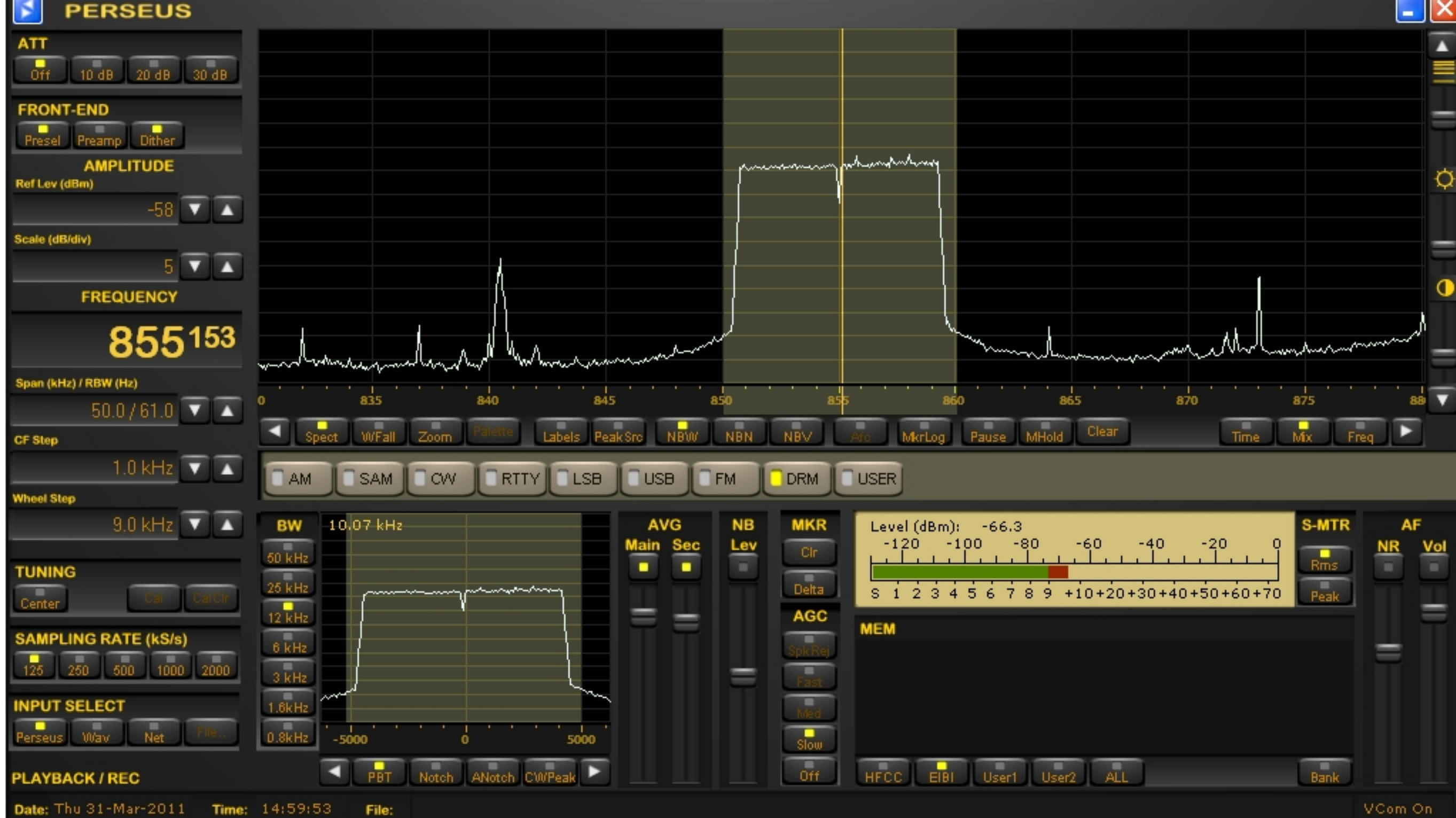
- Input PSD
- Input Spectrum
- Waterfall Input Spectrum
- Shifted PSD
- Audio Spectrum
- SNR Spectrum
- Channel
- Constellation

Channel Estimation: Frequency Interpolation

Misc Settings:

- Flip Input Spectrum
- Mute Audio
- MLC: Number of Iterations: 0
- Interferer Rejection: Bandpass Filter Modif





dream

View Settings ?

Level [dB]
0 -10 -20 -30 -40 -50

18.74 kbps EEP AAC+ P-Stereo

DRadio Wissen
German Germany
Information ID:E0D230

Im Internet unter:
<http://wissen.dradio.de>

1 DRadio Wissen | AAC+ P-Stereo (18.74 kbps) + MM (2.88 kbps) + AFS
2 Nachrichten | HVXC Mono (2.00 kbps)
3 Nachrichten | Data: Journaline (2.88 kbps)

System Evaluation

SNR:	27.1 dB	MSC CRC:	DRM Mode / Bandwidth: A / 9 kHz
MSC WMER / MSC MER:	28.7 dB / 28.7 dB	SDC CRC:	Interleaver Depth: 2 s (Long Interleaving)
DC Frequency of DRM Signal:	7853.16 Hz	FAC CRC:	SDC / MSC Mode: 16-QAM / SM 64-QAM
Sample Frequency Offset:	-46.44 Hz (-967 ppm)	Frame Sync:	Prot. Level (B / A): 1 / 0
Doppler / Delay:	0.22 Hz / 0.58 ms	Time Sync Acq:	Number of Services: Audio: 2 / Data: 1
		I/O Interface:	Received time - date: Thu Mar 31 14:59:00 2011

Chart Selector
Spectrum
Input PSD
Input Spectrum
Waterfall Input Spectrum
Shifted PSD
Audio Spectrum

Input PSD
Input PSD [dB]
-40 -60 -80 -100 -120



dream

View Settings ?

Level [dB] 11.56 kbps EEP aac Mono

HPT AIR KHAMPUR

Hindi India

Folk Music

Welcome

1 HPT AIR KHAMPUR | aac Mono (11.56 kbps)

2

3

4

System Evaluation

SNR: 22.9 dB	MSC CRC: ■	DRM Mode / Bandwidth: B / 10 kHz
MSC WMER / MSC MER: 17.9 dB / 10.6 dB	SDC CRC: ■	Interleaver Depth: 2 s (Long Interleaving)
DC Frequency of DRM Signal: 7077.66 Hz	FAC CRC: ■	SDC / MSC Mode: 4-QAM / SM 16-QAM
Sample Frequency Offset: -46.67 Hz (-972 ppm)	Frame Sync: ■	Prot. Level (B / A): 0 / 0
Doppler / Delay: 0.76 Hz / 0.72 ms	Time Sync Acq: ■	Number of Services: Audio: 1 / Data: 0
	I/O Interface: ■	Received time - date: Service not available

Chart Selector

- Spectrum
- Input PSD**
- Input Spectrum
- Waterfall Input Spectrum
- Shifted PSD
- Audio Spectrum
- SNR Spectrum

Input PSD

Input PSD [dB] vs Frequency [kHz]

PERSEUS

ATT
Off 10 dB 20 dB 30 dB

FRONT-END
Presel Preamp Dither

AMPLITUDE
Ref Lev (dBm) -49
Scale (dB/div) 5

FREQUENCY
9.850000
Span (kHz) / RBW (Hz) 50.0 / 61.0
CF Step 1.0 kHz
Wheel Step 9.0 kHz

TUNING
Center Cal Cal Clr

SAMPLING RATE (kS/s)
125 250 500 1000 2000

INPUT SELECT
Perseus Wav Net File

PLAYBACK / REC
Date: Tue 05-Apr-2011 Time: 10:58:45 File: VCom On

9815 9820 9825 9830 9835 9840 9845 9850 9855 9860

AM SAM CW RTTY LSB USB FM **DRM** USER

BW 11.00 kHz
50 kHz 25 kHz 12 kHz 6 kHz 3 kHz 1.6 kHz 0.8 kHz

AVG Main Sec

NB Lev

MKR Clr Delta

AGC Spk Rej Fast Med Slow Off

Level (dBm): -57.8
-120 -100 -80 -60 -40 -20 0
S 1 2 3 4 5 6 7 8 9 +10 +20 +30 +40 +50 +60 +70

S-MTR Rms Peak

AF NR Vol

MEM
B2-001 01611.0 kHz DRM DRM - Vatican Radio
B2-002 06020.0 kHz DRM DRM - Galbeni ID-301
B2-003 07325.0 kHz DRM DRM - Label Service 0
B2-004 09676.0 kHz DRM DRM - Voice of Russia
B2-005 06150.0 kHz DRM DRM - The Disco Palace
B2-006 09870.0 kHz DRM DRM - RNZI

HFCC EIBI User1 User2 ALL Bank

dream

View Settings ?

Level [dB] 14.06 kbps EEP AAC+ Mono
Label Service 0
Other language
ID:FF0010

1 Label Service 0 | AAC+ Mono (14.06 kbps)
2

System Evaluation

SNR: 20.2 dB	MSC CRC: ■	DRM Mode / Bandwidth: B / 10 kHz
MSC W/MER / MSC M/R: 13.8 dB / 11.0 dB	SDC CRC: ■	Interleaver Depth: 2 s (Long Interleaving)
DC Frequency of DRM Signal: 8087.94 Hz	FAC CRC: ■	SDC / MSC Mode: 16-QAM / SM 16-QAM
Sample Frequency Offset: -47.57 Hz (-991 ppm)	Frame Sync: ■	Prot. Level (B / A): 1 / 1
Doppler / Delay: 2.26 Hz / 1.85 ms	Time Sync Acq: ■	Number of Services: Audio: 1 / Data: 0
	I/O Interface: ■	Received time - date: Service not available

Chart Selector
Spectrum
Input PSD
Input Spectrum
Waterfall Input Spectrum

Input PSD
Input PSD [dB] -40 -60 -80 -100 -120



View Settings ?

Level (dB) 17.16 kbps EEP AAC+ Mono

RCI

English Canada
Current Affairs ID:A1C003

"From Sackville NB, Canada for listening pleasure"

1 RCI | AAC+ Mono (17.16 kbps)

2

3

4



Start

Google Earth dream E2 VHS Converter Any Video Converter LexiROM 2

Microsoft Outlook starten MixW Mediathek MediaJoh Encanto Wikioalas

Mozilla Firefox NYSSTV TerraTec Home Cinema MyTuba Downloader Power Translator 10

Perseus dream

System Evaluation

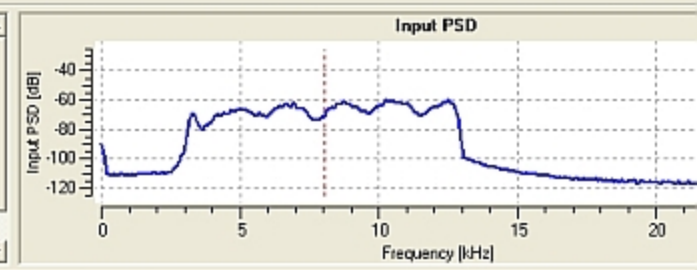
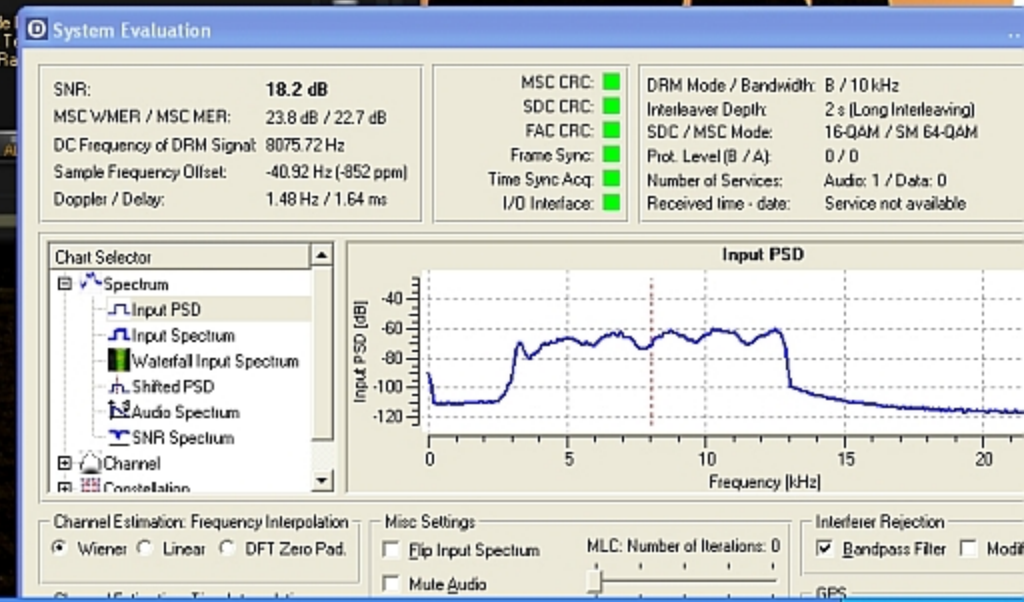
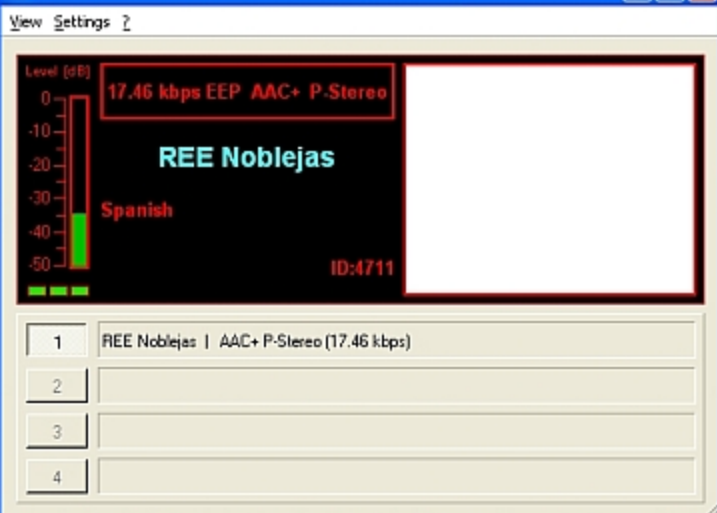
SNR: 20.4 dB	MSC CRC: ■	DRM Mode / Bandwidth: B / 10 kHz
MSC WMER / MSC MER: 22.2 dB / 20.2 dB	SDC CRC: ■	Intelleaver Depth: 2 s (Long Intelleaving)
DC Frequency of DRM Signal: 8080.56 Hz	FAC CRC: ■	SDC / MSC Mode: 16-QAM / 5M 64-QAM
Sample Frequency Offset: -47.61 Hz (-991 ppm)	Frame Sync: ■	Prot. Level (B / A): 0 / 0
Doppler / Delay: 0.53 Hz / 7.49 ms	Time Sync Acq: ■	Number of Services: Audio: 1 / Data: 0
	I/D Interface: ■	Received time - date: Thu Mar 24 22:40:00

Chart Selector

- Input PSD
- Input Spectrum
- Waterfall Input Spectrum
- Shifted PSD

Input PSD

DE 23:42



PERSEUS

ATT: Off, 10 dB, 20 dB, 30 dB

FRONT-END: Presel, Preamp, Dither

AMPLITUDE: Ref Lev (dBm): -58, Scale (dB/div): 5

FREQUENCY: 9.870000, Span (kHz) / RBW (Hz): 25.0 / 30.5, F Step: 1.0 kHz, Wheel Step: 9.0 kHz

MODES: AM, SAM, CW, RTTY, LSB, USB, FM, **DRM**, USER

Level (dBm): -82.4

MEM: B2-001 01611.0 kHz DRM DRM - Vatican Radio, B2-002 06020.0 kHz DRM DRM - Galbeni ID-301, B2-003 07325.0 kHz DRM DRM - Label Service 0, B2-004 09676.0 kHz DRM DRM - Voice of Russia, B2-005 06150.0 kHz DRM DRM - The Disco Palace, B2-006 09870.0 kHz DRM DRM - RNZI

Level [dB] scale: 0, -10, -20, -30, -40, -50

15.48 kbps UEP (1.8 %) AAC+ Mono

RNZI

English, Varied, New Zealand, ID:36

1 RNZI | AAC+ Mono (15.48 kbps)

2

3

4

Level (dBm): -82.4

Level (dBm) scale: -120, -100, -80, -60, -40, -20, 0

AF: NR, Vol

VCam Off

Date: Sat 26-Mar-2011 Time: 09:32:15 File:

System Evaluation

SNR: **6.2 dB**

MSC WMER / MSC MER: 10.2 dB / 1.2 dB

DC Frequency of DRM Signal: 8078.35 Hz

Sample Frequency Offset: -27.88 Hz (-580 ppm)

Doppler / Delay: 2.70 Hz / 6.26 ms

MSC CRC: ■

SDC CRC: ■

FAC CRC: ■

Frame Sync: ■

Time Sync Acq: ■

I/O Interface: ■

DRM Mode / Bandwidth: B / 10 kHz

Interleaver Depth: 2 s (Long Interleaving)

SDC / MSC Mode: 16-QAM / SM 64-QAM

Prot. Level (B / A): 0 / 0

Number of Services: Audio: 1 / Data: 0

Received time - date: Service not available

Chart Selector: Spectrum, **Input PSD**, Input Spectrum, Waterfall Input Spectrum, Shifted PSD, Audio Spectrum

Input PSD

Input PSD (dB) scale: -40, -60, -80, -100, -120

Frequency [kHz] scale: 0, 5, 10, 15, 20

Start: Perseus, dream

10:32

PERSEUS

ATT: Off | 12 dB | 20 dB | 30 dB

FRONT-END: Phase | Preamp | DeMod

AMPLITUDE: Ref Lev (dBm): -56

Scale (dBmV): 5

FREQUENCY: **6.095000**

Span (kHz) / RBW (Hz): 50.0 / 61.0

CF Step: 5.0 kHz

Mixed Step: 5.0 kHz

TUNING: Center

SAMPLING RATE (kS/s): 125 | 250 | 500 | 1000 | 2000

INPUT SELECT: Perseus | Wave | USB | FM

PLAYBACK / REC: Date: Tue 15-Mar-2011 Time: 07:09:21 File:

Empfangende DRM- Sender als PDF-Datei

Bitte klicken !!

Level (dBm): -52.3

AGG: MEM 0000 2400 Broadcasting Co

Buttons: AM, SAM, CV, RTTY, LSD, USB, FM, DRM, USDR

dream

Year Settings 1

Level (dB): 17.20 kbps EEP AAC+ P-Stereo

RTL RADIO

www.rtlradio.de

German Luxembourg

Varied ID: E17110

1 RTL RADIO | AAC+ P-Stereo (17.20 kbps) + MM (0.26 kbps)

2

3

4

System Evaluation

SNR: 27.5 dB	MSC CRC: <input checked="" type="checkbox"/>	DRM Mode / Bandwidth: B / 10 kHz
MSC WHER / MSC MER: 30.8 dB / 30.0 dB	SDC CRC: <input checked="" type="checkbox"/>	Interleaver Depth: 2 s (Long/Interleaving)
DC Frequency of DRM Signal: 8107.35 Hz	FAC CRC: <input checked="" type="checkbox"/>	SDC / MSC Mode: 16-QAM / SM 64-QAM
Sample Frequency Offset: -47.07 Hz (-960 ppm)	Frame Sync: <input checked="" type="checkbox"/>	Prot. Level (B / A): 0 / 0
Doppler / Delay: 0.91 Hz / 6.87 ms	Time Sync Acq: <input checked="" type="checkbox"/>	Number of Services: Audio: 1 / Data: 0
	I/Q Interface: <input checked="" type="checkbox"/>	Received time - date: Tue Mar 15 07:09:00 2011

Chart Selector: Spectrum

- Input PSD
- Input Spectrum
- Waterfall Input Spectrum
- Shifted PSD
- Audio Spectrum
- SNR Spectrum

Input PSD

Channel Estimation: Frequency Interpolation: Wiener | Linear | DFT ZeroPad

Misc Settings: EIQ Input Spectrum MLC Number of Iterations: 0 Mute Audio

Interleaver Rejection: Bandpass Filter Mode

Windows Desktop Icons:

- Google Earth
- NovW
- E2 VHS Converter
- Redalgin
- Encarta Websites
- Microsoft Outlook starten
- MP3STV
- Redalithk
- NyTube Downloader
- Power Translator 10
- Mozilla Firefox
- ROS vs.6.2 Beta
- TerraTec Home Cinema
- Audacky
- Microsoft Word

Taskbar: Start | Perseus | dream | 08:09

PERSEUS

ATT
Off 10 dB 20 dB 30 dB

FRONT-END
Presel Preamp Dither

AMPLITUDE
Ref Lev (dBm) -48
Scale (dB/div) 5

FREQUENCY
9.750000
Span (kHz) / RBW (Hz) 50.0 / 61.0
CF Step 1.0 kHz
Wheel Step 9.0 kHz

TUNING
Center Cal Cal Cr

SAMPLING RATE (kS/s)
125 250 500 1000 2000

INPUT SELECT
Perseus Wav Net File

PLAYBACK / REC
Date: Thu 31-Mar-2011 Time: 15:10:05 File: VCom On

AM SAM CW RTTY LSB USB FM **DRM** USER

BW 10.07 kHz
50 kHz 25 kHz 12 kHz 6 kHz 3 kHz 1.6 kHz 0.8 kHz

AVG Main Sec

NB Lev

MKR Clr Delta

AGC Spk Ref Fast Med Slow Off

MEM
1400 1600 RTM Suara Islam - MLA (ML)
1100 1600 Radio Kuwait - KWT (A)
0700 1700 NHK Radio Japan - J (J)
1500 1605 PBS Nei Menggu - CHN (MO) hh

Level (dBm): -52.7
-120 -100 -80 -60 -40 -20 0
S 1 2 3 4 5 6 7 8 9 +10 +20 +30 +40 +50 +60 +70

S-MTR Rms Peak

AF NR Vol

HFCC **EIBI** User1 User2 ALL **Bank**



View Settings ?

Level [dB] 17.38 kbps EEP AAC Mono
Voice of Russia
Varied ID:E07002

1	Voice of Russia AAC Mono (17.38 kbps)
2	
3	

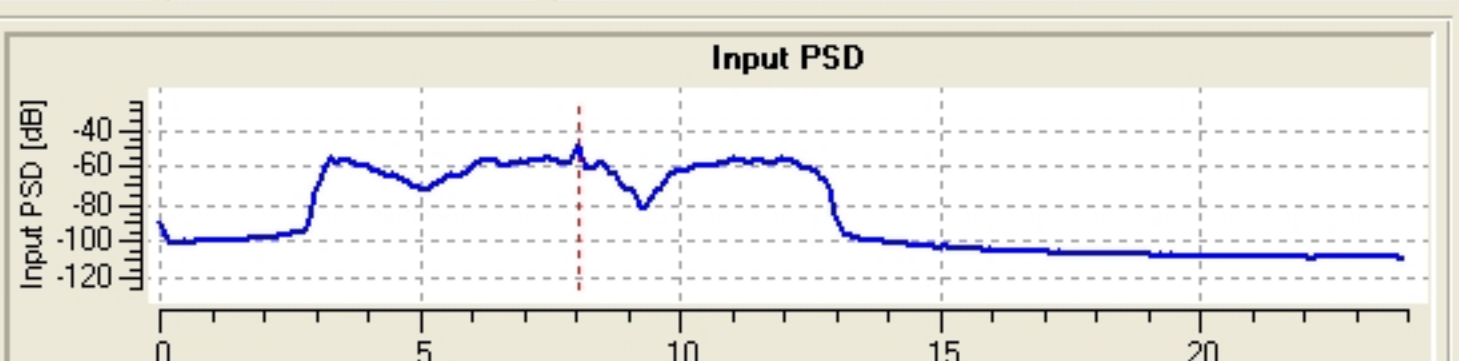
SNR: **18.6 dB**
 MSC WMER / MSC MER: 19.0 dB / 18.0 dB
 DC Frequency of DRM Signal: 8074.29 Hz
 Sample Frequency Offset: -42.87 Hz (-893 ppm)
 Doppler / Delay: 1.07 Hz / 1.33 ms

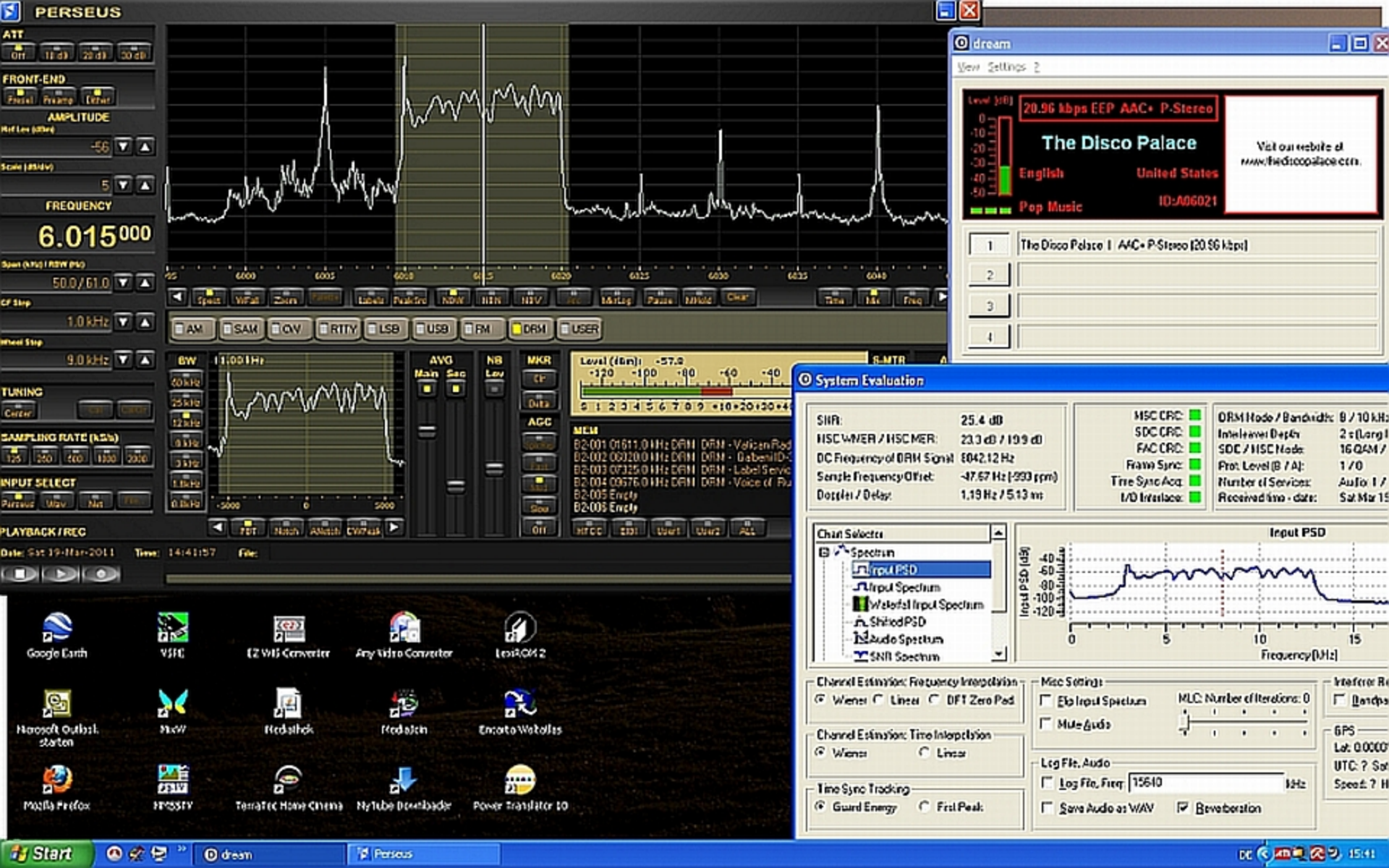
MSC CRC: ■
 SDC CRC: ■
 FAC CRC: ■
 Frame Sync: ■
 Time Sync Acq: ■
 I/O Interface: ■

DRM Mode / Bandwidth: B / 10 kHz
 Interleaver Depth: 2 s (Long Interleaving)
 SDC / MSC Mode: 4-QAM / SM 64-QAM
 Prot. Level (B / A): 0 / 0
 Number of Services: Audio: 1 / Data: 0
 Received time - date: Service not available

Chart Selector

- Spectrum
- Input PSD
- Input Spectrum
- Waterfall Input Spectrum
- Shifted PSD
- Audio Spectrum





PERSEUS

ATT: OFF 11 dB 20 dB 30 dB

FRONT-END: Front Preset Edit

AMPLITUDE: -56

Scale (dBmV): 5

FREQUENCY: 6.015000

Span (Hz) / RBW (Hz): 50.0 / 61.0

CF Step: 1.0 kHz

IF Step: 9.0 kHz

TUNING: Center

SAMPLING RATE (kS/s): 125 250 500 1000 2000

INPUT SELECT: Perseus Map Mx

PLAYBACK / REC: Date: Sat 19-Mar-2011 Time: 14:41:57 File:



dream View Settings 2

Level (dB): 20.96 kbps AAC+ P-Stereo

The Disco Palace

English United States

Pop Music ID: A06021

Visit our website at www.thediscooplace.com

1	The Disco Palace AAC+ P-Stereo (20.96 kbps)
2	
3	
4	

System Evaluation

SNR:	25.4 dB	MSC CRC:	Green	DRM Mode / Bandwidth:	0 / 10 kHz
MSC W/MER / MISC MER:	23.3 dB / 19.9 dB	SDC CRC:	Green	Interleave Depth:	2 s (Larg)
DC Frequency of DRM Signal:	6042.12 Hz	FAC CRC:	Green	SDC / MISC Mode:	16 QAM /
Sample Frequency Offset:	-47.67 Hz (-993 ppm)	Frame Sync:	Green	Prot. Level (B / A):	1 / 0
Doppler / Delay:	1.19 Hz / 5.13 ns	Time Sync Acq:	Green	Number of Services:	Audio 1 /
		I/D Interface:	Green	Received time - date:	Sat Mar 19

Channel Selects: Spectrum, Input PSD, Input Spectrum, Waterfall Input Spectrum, Shaded PSD, Audio Spectrum, SNR Spectrum

Channel Estimation: Frequency Interpolation: Wiener Linear DFT Zero Pad

Channel Estimation: Time Interpolation: Wiener Linear

Time Sync Tracking: Guard Energy First Peak

Input PSD: Graph of Input PSD (dB) vs Frequency (kHz). Range: -120 to -40 dB, 0 to 15 kHz.

Misc Settings: Ekip Input Spectrum, Mute Audio, Log File: Audio, Log File: Fixed 15610 kHz, Save Audio as WAV, Debeverton

MLC: Number of Iterations: 0

Interferer Re: Bandpass

GPS: Lat: 0.0000, UTC: ? Sat, Speed: ? H

Desktop Icons:

- Google Earth
- VLC
- EZ MP3 Converter
- Any Video Converter
- LexiROM 2
- Microsoft Outlook
- Power2Go
- Redshift
- Redshift
- Encanto WebPages
- Mozilla Firefox
- FR055TV
- TerraTec Home Cinema
- NyTube Downloader
- Power Transfer 10

Taskbar: Start, dream, Perseus, DC, 15:41



dream

View Settings 2

Level (dB): 0 | -10 | -20 | -30 | -40 | -50

15.32 kbps EEP AAC+ Mono

Vatican Radio

This is a DRM MW transmission 1611kHz from Vatican Radio (Vatican City).

ID:E24104

Varied

1 Vatican Radio | AAC+ Mono (15.32 kbps)

2

3

4

System Evaluation

SNR: 26.9 dB

MSC w/MER / MSC MER: 27.0 dB / 26.8 dB

DC Frequency of DRM Signal: 8011.78 Hz

Sample Frequency Offset: -46.86 Hz (-976 ppm)

Doppler / Delay: 0.40 Hz / 4.87 ms

MSC CRC: ■

SDC CRC: ■

FAC CRC: ■

Frame Sync: ■

Time Sync Acq: ■

I/D Interface: ■

DRM Mode / Bandwidth: B / 9 kHz

Interleaver Depth: 2 s (Long Interleaving)

SDC / MSC Mode: 4-QAM / SM 64-QAM

Prot. Level (B / A): 0 / 0

Number of Services: Audio: 1 / Data: 0

Received time - date: Service not available

Chart Selector

- Input PSD
- Input Spectrum
- Waterfall Input Spectrum
- Shifted PSD
- Audio Spectrum
- SNR Spectrum

Channel

Constellation

Input PSD

Input PSD (dB)

Frequency (kHz)

Channel Estimation: Frequency Interpolation

Wiener | Linear | DFT Zero Pad

Misc Settings

Elip Input Spectrum

Mute Audio

MLC: Number of Iterations: 0

Interferer Rejection

Bandpass Filter

Modified Metrics

Channel Estimation: Time Interpolation

GPS

Lat: 0.0000° Long: 0.0000° Alt: ?

Start

Perseus | dream

Google Earth | MixW | EZ WHS Converter | MediaJoin | Encarta Wekolas

Microsoft Outlook starten | NMSSTV | Mediathek | MyTube Downloader | Power Translator 10

Mozilla Firefox | ROS v5.6.2 Beta | TerraTec Home Cinema | Audacity | Microsoft Word

22:56

PERSEUS

ATT
Off 10 dB 20 dB 30 dB

FRONT-END
Presel Preamp Dither

AMPLITUDE
Ref Lev (dBm) -46
Scale (dB/div) 5

FREQUENCY
9.750000
Span (kHz) / RBW (Hz) 50.0 / 61.0
CF Step 1.0 kHz
Wheel Step 9.0 kHz

TUNING
Center Cal Cal Clr

SAMPLING RATE (kS/s)
125 250 500 1000 2000

INPUT SELECT
Perseus Wav Net File..

PLAYBACK / REC
PBT Notch ANotch CWPeak

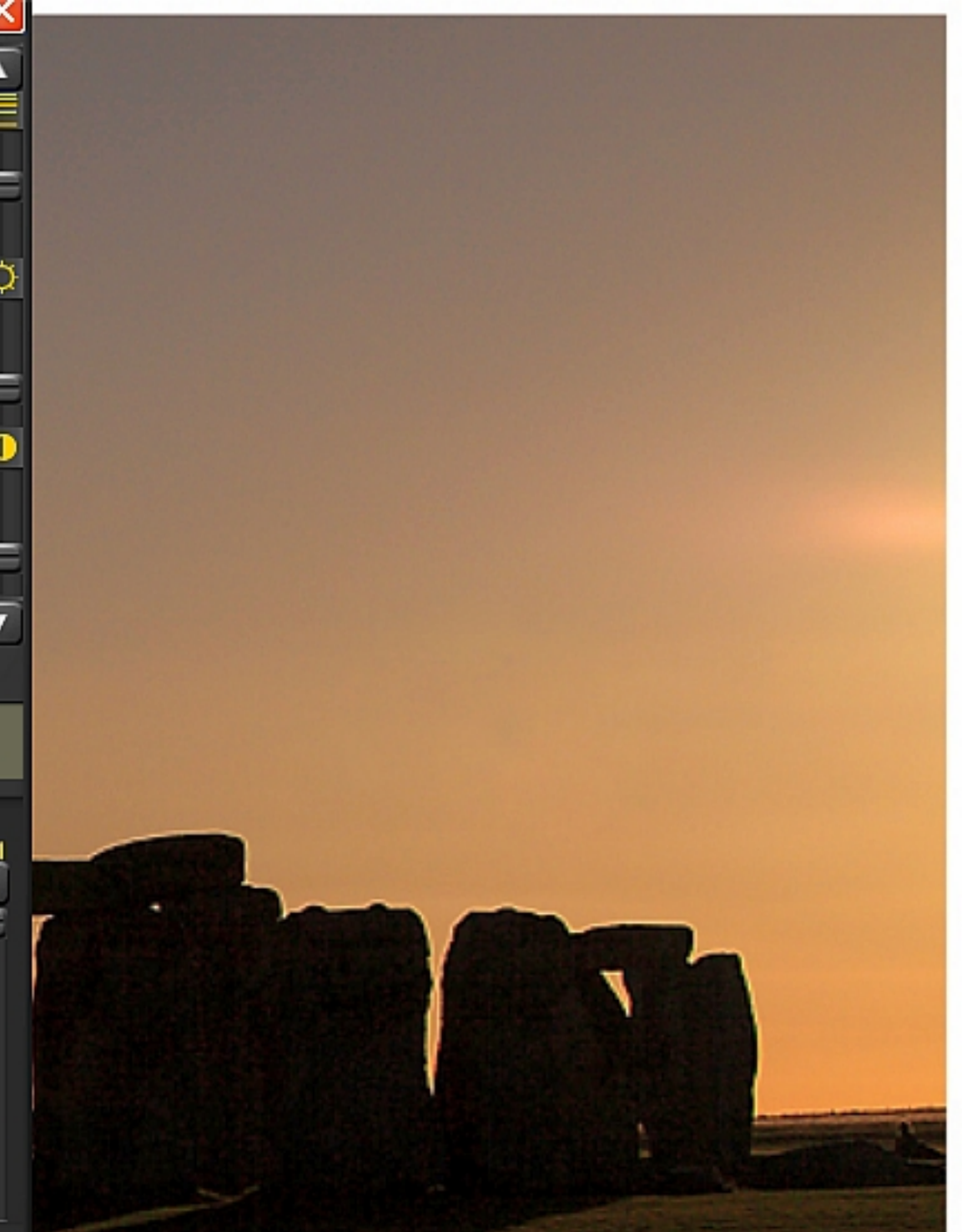
AM SAM CW RTTY LSB USB FM DRM USER

Level (dBm): -68.2
-120 -100 -80 -60 -40 -20 0
S 1 2 3 4 5 6 7 8 9 +10+20+30+40+50+60+70

MEM
1200 1400 Voice of Malaysia - MLA (IN)
1100 1600 Radio Kuwait - KWT (A)
0700 1700 NHK Radio Japan - J (J)
0950 1400 PBS Nei Menggu - CHN (MO) hh

AVG Main Sec
NB Lev
MKR Clr Delta
AGC Spk Rej Fast Med Slow Off
S-MTR Rms Peak
AF NR Vol

BW 11.00 kHz
50 kHz 25 kHz 12 kHz 6 kHz 3 kHz 1.8 kHz 0.8 kHz



dream
View Settings ?

Level [dB] 0 -10 -20 -30 -40 -50
17.38 kbps EEP AAC Mono
Voice of Russia
Varied ID:E07002

A digital transmission from Taldom,
Russia. TX site e-mail: rc-3-buch@mail.ru.
VDR web-site: www.ruvr.ru. For QSL:
letters@ruvr.ru

1 Voice of Russia | AAC Mono (17.38 kbps)
2
3
4

System Evaluation

SNR: **21.1 dB**
MSC WMER / MSC MER: 22.3 dB / 12.2 dB
DC Frequency of DRM Signal: 8079.97 Hz
Sample Frequency Offset: -44.96 Hz (-936 ppm)
Doppler / Delay: 0.89 Hz / 2.26 ms

MSC CRC: ■
SDC CRC: ■
FAC CRC: ■
Frame Sync: ■
Time Sync Acq: ■
I/O Interface: ■

DRM Mode / Bandwidth: B / 10 kHz
Interleaver Depth: 2 s (Long Interleaving)
SDC / MSC Mode: 4-QAM / SM 64-QAM
Prot. Level (B / A): 0 / 0
Number of Services: Audio: 1 / Data: 0
Received time - date: Service not available

Chart Selector
Spectrum
Input PSD
Input Spectrum
Waterfall Input Spectrum
Shifted PSD
Audio Spectrum
SNR Spectrum

Input PSD
Input PSD [dB] -40 -60 -80 -100 -120
Frequency [kHz] 0 5 10 15 20

PERSEUS

ATT
Off 10 dB 20 dB 30 dB

FRONT-END
Presel Preamp Dither

AMPLITUDE
Ref Lev (dBm) 7

Scale (dB/div) 10

FREQUENCY
15.64000

Span (kHz) / RBW (Hz) 100.0 / 122.1

CF Step 1.0 kHz

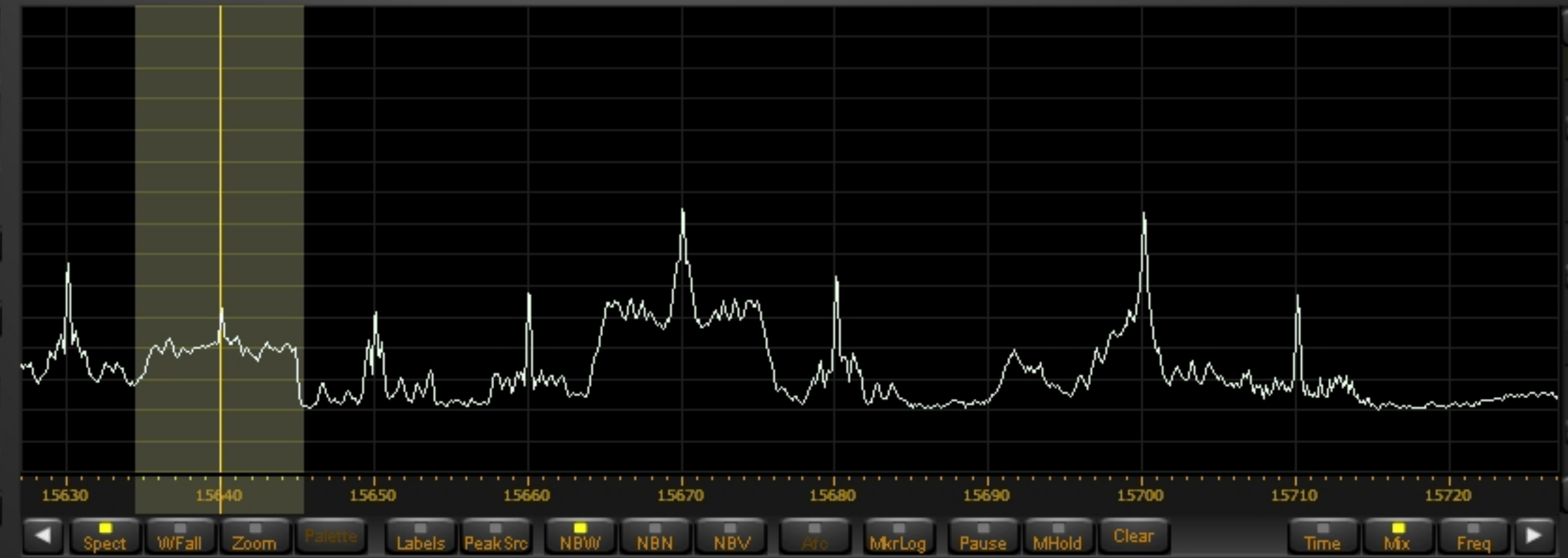
Wheel Step 9.0 kHz

TUNING
Center Cal CalClr

SAMPLING RATE (kS/s)
125 250 500 1000 2000

INPUT SELECT
Perseus W/av Net File

PLAYBACK / REC
Date: Sun 27-Mar-2011 Time: 15:03:37 File:



AM SAM CW RTTY LSB USB FM **DRM** USER

BW 11.00 kHz

AVG Main Sec NB Lev MKR Clr Delta AGC SpkRel Fast Med Slow Off

Level (dBm): -81.7

MEM
B2-001 01611.0 kHz DRM DRM - Vatican Radio
B2-002 06020.0 kHz DRM DRM - Galbeni ID-301
B2-003 07325.0 kHz DRM DRM - Label Service 0
B2-004 09676.0 kHz DRM DRM - Voice of Russia
B2-005 06150.0 kHz DRM DRM - The Disco Palace
B2-006 09870.0 kHz DRM DRM - RNZI

HFCC EIBI User1 User2 ALL

dream

View Settings ?

Level [dB] 16.92 kbps EEP AAC+ P-Stereo

BBC & DW

English
Current Affairs ID:E1C248

1 BBC & DW | AAC+ P-Stereo (16.92 kbps) + EPG (0.54 kbps) + AFS
2 BBC & DW News | Data: Journaline (0.54 kbps)
3
4

System Evaluation

SNR: **7.3 dB**

MSC WMER / MSC MER: 13.3 dB / 6.8 dB

DC Frequency of DRM Signal: 8115.85 Hz

Sample Frequency Offset: -46.63 Hz (-971 ppm)

Doppler / Delay: 2.15 Hz / 1.74 ms

MSC CRC: ■ DRM Mode / Bandwidth
SDC CRC: ■ Interleaver Depth:
FAC CRC: ■ SDC / MSC Mode:
Frame Sync: ■ Prot. Level (B / A):
Time Sync Acq: ■ Number of Services:
I/O Interface: ■ Received time - date:

Chart Selector
Spectrum
Input PSD
Input Spectrum
Waterfall Input Spectrum
Shifted PSD
Audio Spectrum
SNR Spectrum

Input PSD [dB]

Frequency

Channel Estimation: Frequency Interpolation
 Wiener Linear DFT Zero Pad.

Misc Settings
 Flip Input Spectrum MLC: Number of Iterations: 0
 Mute Audio

Channel Estimation: Time Interpolation
 Wiener Linear

Log File, Audio
 Log File, Freq: 15640 kHz
 Save Audio as WAV Reverberation

Time Sync Tracking
 Guard Energy First Peak

Taskbar showing Start button and running applications: Avira AntiVir Premium, Luke Filewalker, Perseus, dream, Google Übersetzer - ...

Desktop icons: Google Earth, dream, EZ VHS Converter, Any Video Converter, LexiROM 2, Microsoft Outlook starten, MixW, Mediathek, MediaJoin, Encarta Weltatlas, Mozilla Firefox, MMSSTV, TerraTec Home Cinema, MyTube Downloader, Power Translator 10.